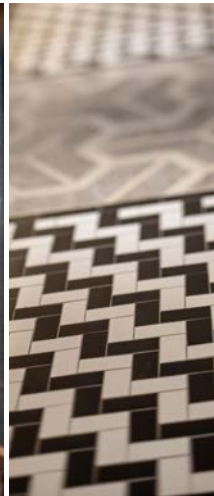




Welcome

Hotel Information





Kyoto SYNAPSE - Everlasting memories, Intertwined moments.

Like a synaptic connection to Kyoto, our hotel is an intersection between the historic and the modern, and the traditional and innovative. Kyoto's renewed allure has been captured to ensure inspired stays for all our Guests.

Memories last forever at Hilton Kyoto

About a 15-minute drive from Kyoto Station in the Kawaramachi Sanjo district in the city's heart, the hotel is in walking distance of the famous atmospheric streets of Ponto-cho and Gion. It is also ideally located near other major tourist attractions. Facilities include four restaurants, banquet and meeting rooms suit any kind of occasion, spa for treatments, and an indoor swimming pool deliver Guests with the finest kind of Japanese hospitality only Hilton can provide.



Staying

Large, 40 sq m Guest rooms. Enjoy a comfortable stay in a space filled with the traditional beauty of Kyoto.

Eating

Stimulate all five senses at a buffet with a diverse range of international food inspired by the essence of Kyoto, or the rooftop bar with striking panoramic views of Kyoto.



Convenient Access

- 2-minute walk from Kyoto Shiyakusho-mae Station (Kyoto City Hall) on the Tozai Subway Line
- 4-minute walk from Sanjo Station on the Keihan Main Line
- 10-minute walk from Kyoto Kawaramachi Station on the Hankyu Railway Kyoto Line



Hotel Details

Check-in 3 pm, Check-out 11 am

313 Guest rooms (5 categories, 16 types)
Completely non-smoking property

Guest Rooms: 40 sq m

Deluxe Rooms: 40 sq m

Premium Rooms: 52 sq m

Executive Rooms: 40 sq m

Suites: 80 sq m - 121 sq m

Connecting Rooms: 28 pairs (for groups or families)

4 elevators, 2 emergency exits on each floor

2 restaurants, 1 café/bar, 1 rooftop bar,

Fitness center, spa, indoor swimming pool, room service

1 banquet hall, 1 conference room (can be divided)

Parking: 47 spaces, parking fees apply

Bicycle parking: 25 spaces, parking fees apply

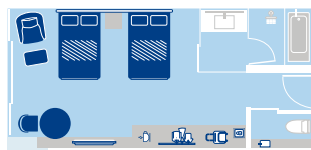
Wi-Fi available in Guest rooms (fees apply)

GUEST ROOMS

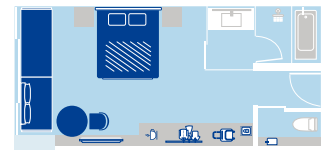
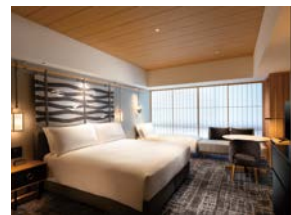
The 16 types of rooms range from 40 sq m Guest rooms up to the 121 sq m suite. Rooms are equipped with a 55-inch TV and a Nespresso coffee machine, and have a separated bathroom. Guests' diverse needs are catered for with connecting rooms and accessible rooms.

Guest rooms are on the 2nd to 7th floors. Up to three Guests can stay in King rooms. Some Guest rooms can be used as connecting rooms.

Twin Guest Room (40 sq m) Bed sizes 120×200 cm



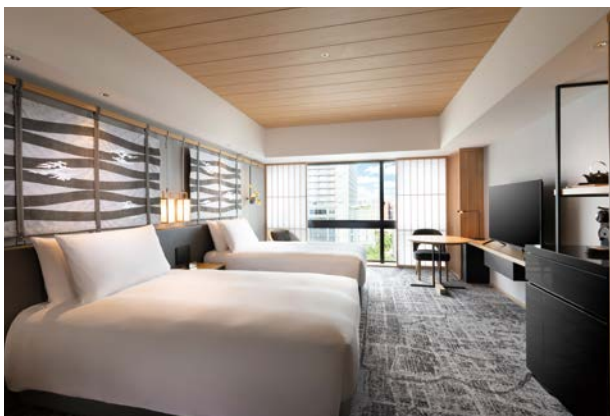
King Guest Room (40 sq m) Bed size 180×200 cm



*Example of using an extra bed

This beautiful space on an exclusive higher floor features an elegant and stylish Japanese-style room with access to an exclusive lounge, ensuring your stay in Kyoto is memorable.

Executive Rooms (40 sq m) [8F-9F] Twin/King



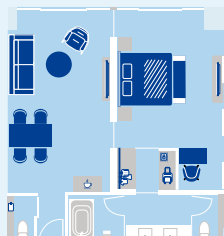
SUITE ROOMS

These special suites provide a separate hospitality space to welcome Guests in true Kyoto style.

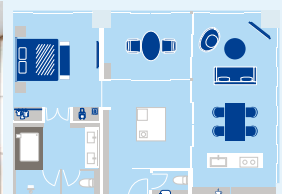
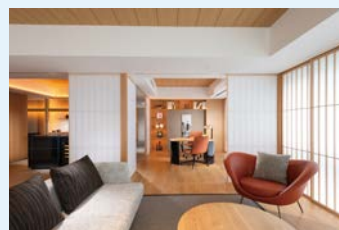
King Kyoto Suite (121 sq m)



King Deluxe Suite (80 sq m)



King Premium Suite (120 sq m)



*Both types share the same layout.

FACILITIES



Executive Lounge [9F]

This exclusive lounge is for Guests staying in Executive Rooms and Suites. Our Guest Relations Officers will be on hand to support you during your stay in this cozy space, modeled after a traditional *machiya* (townhouse) in Kyoto. Enjoy complimentary food and drinks, including a hearty breakfast, refreshments, and evening cocktails while admiring the courtyard garden that displays the beauty of the four seasons.

Open 7 am - 9 pm (78 seats)

Breakfast 7 am - 10:30 am, Refreshments 10:30 am - 5 pm, Evening Cocktails 5:30 pm - 7:30 pm

*Refreshments available from 7:30 pm until close / Completely non-smoking / Private check-in and check-out available

[B1F]

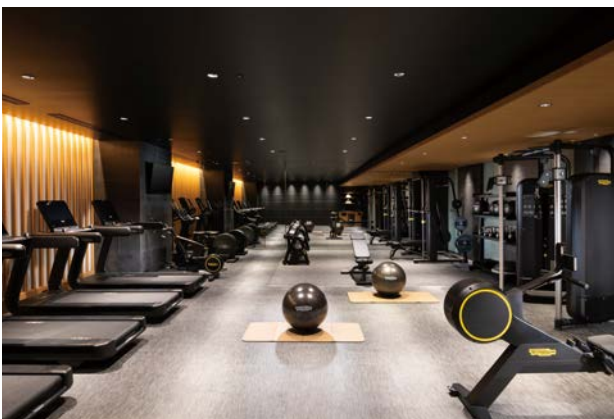
eforea SPA (10 am - 9 pm) Last admission: 7:30 pm

This is the first location in Japan for Hilton's luxurious eforea spa brand. Enjoy blissful spa treatments for your body and mind in this relaxing space. Our original treatment oils use essential oils sourced from natural ingredients around Kyoto. Come experience an authentic spa journey to drift you away from everyday concerns.



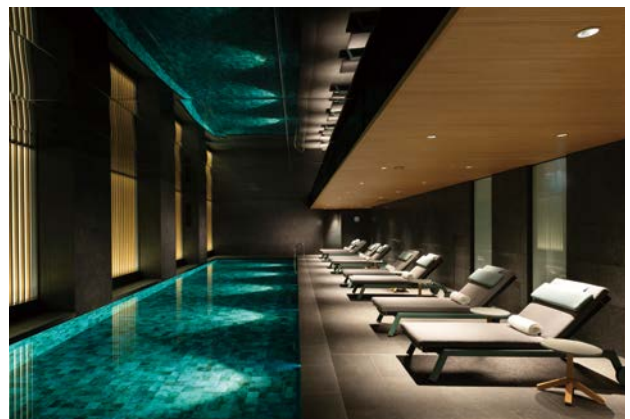
Fitness Center (24 hours)

The fitness center features the latest training equipment from Technogym. This is the perfect space to work up a good sweat and refresh yourself. [For staying Guests only]



Indoor Swimming Pool (6 am - 10 pm)

Our heated pool is 18 m long and 1.2 m deep, ideal for enjoying a relaxing time in a peaceful space. [For staying Guests only]



*Opening hours may vary.

RESTAURANTS AND BARS



Our four restaurants and bars offer diverse menus from breakfast to the nighttime bar. Take some time out to enjoy a special place where you can sense the seasonal beauty of Kyoto.

Téori

[1F]

All-day Dining
Téori

The diverse range of international food is infused with the iconic flavors of Kyoto. We provide both à la carte and buffet options for breakfast, lunch, and dinner. Enjoy sophisticated flavors created by the chef in a lively setting, with an open kitchen at its center. (120 seats)



7 EMBERS

[1F]

Restaurant
7 EMBERS

The allure of fire combines with Mediterranean-inspired cuisine in this specialty restaurant. Delight in the wide variety of colorful and tasty dishes in a cozy setting, accompanied by the alluring aromas of fresh ingredients and the visual appeal of an open fire. (64 seats)



LATTICE LOUNGE

[1F]

Lobby Lounge and Bar
LATTICE LOUNGE

Kyoto textiles inspired this atrium's welcoming lattice-style design, creating a beautiful and welcoming space for Guests. Enjoy an original afternoon tea, light meals, or a special coffee blend from Kyoto's famous Ogawa Coffee store. In evenings the lounge becomes a bar, providing a tranquil setting for patrons. (54 seats)



CLOUD NEST ROOFTOP BAR

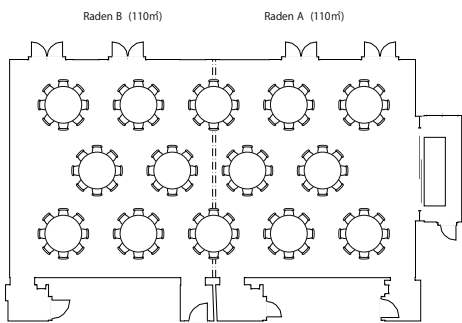
[Rooftop]

Rooftop Bar
CLOUD NEST ROOFTOP BAR

This distinctive rooftop bar offers a special opportunity to appreciate Kyoto's renowned beauty, while also enjoying the changing scenery and an ambience that evokes a sense of seclusion from the urban environment. The menu features freshly prepared dishes and a tempting selection of drinks, including cocktails. (72 seats/Seasonal Openings)

MEETINGS AND EVENTS

We are pleased to offer a variety of banquet options to suit your requirements, from international conferences and business meetings to intimate dinner parties. The Banquet Rooms are all on B2F with easy access by escalator direct from the lobby. The entire floor can also be booked, including the 165 sq m foyer. Our experienced Team Members will meticulously support all your needs.



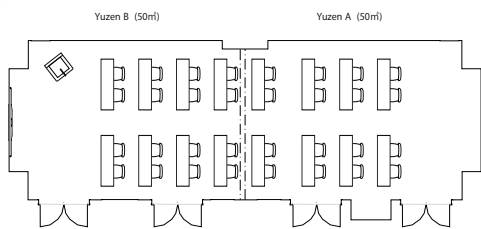
Ballroom RADEN (220 sq m)

The venue has a stylish, open space with a 5 m ceiling, and is equipped with cutting-edge AV equipment, large LED monitors, and smart lighting. The space can also be divided into two separate areas. An open kitchen can give Guests the pleasure of watching a live demonstration by our skilful chef.

Floor	Space	sq m	Tsubo	Height (m)	Sit-down meal	Standing buffet	'Schoolroom' layout, 2 seats per table	Theater
B2F	Entire RADEN	220	66.5	5.0-5.3	117	200	96	200
	RADEN A	103	31.1	5.0-5.3	45	70	48	120
	RADEN B	103	31.1	5.0-5.3	45	70	48	120
	Foyer	163	49.3	5.3-5.4		110		

Meeting Room YUZEN (100 sq m)

Located opposite RADEN, this meeting room with a 3 m ceiling can be divided into two separate areas, making it ideal for a variety of meetings, seminars, training sessions, and interviews. Furnished with sound equipment and two monitors, this flexible space suits everything from private gatherings to a waiting room for a ballroom.



Floor	Space	sq m	Tsubo	Height (m)	Sit-down meal	Standing buffet	'Schoolroom' layout, 2 seats per table	Theater
B2F	Entire YUZEN	100	30.2	3.5-3.8	45	70	40	112
	YUZEN A	43	13.0	3.5-3.8	18	30	16	48
	YUZEN B	43	13.0	3.5-3.8	18	30	16	48
	Foyer	163	49.3	5.3-5.4		110		

ACCESS

Bus or train

■ From JR Kyoto Station

- 2 minute walk from Kawaramachi Sanjo bus stop on Kyoto City Bus Route 4, 5, 7, 205
- From Kyoto Station, take the Kyoto Municipal Subway Karasuma Line (bound for Kōkusaikaikan) to Karasuma Oike. Change to the Municipal Subway Tozai Line (bound for Rokujizō) and get off at Kyoto Shiyakusho-mae Station. 2 minute walk from the station

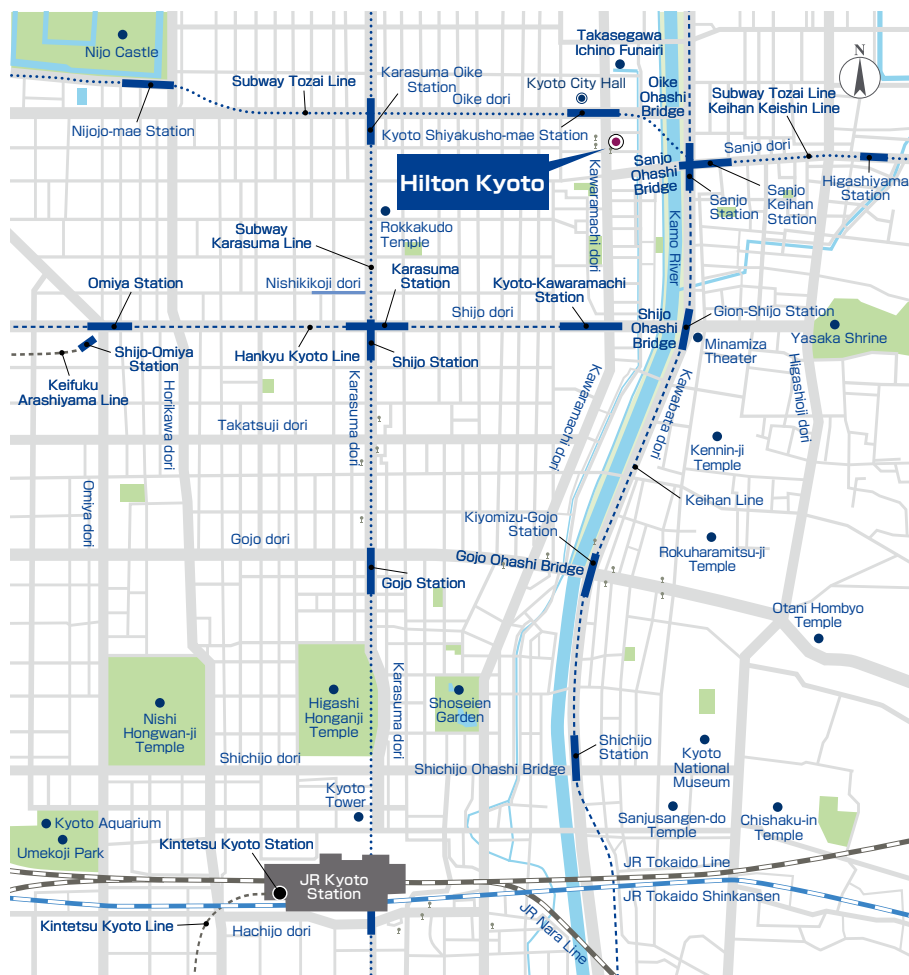
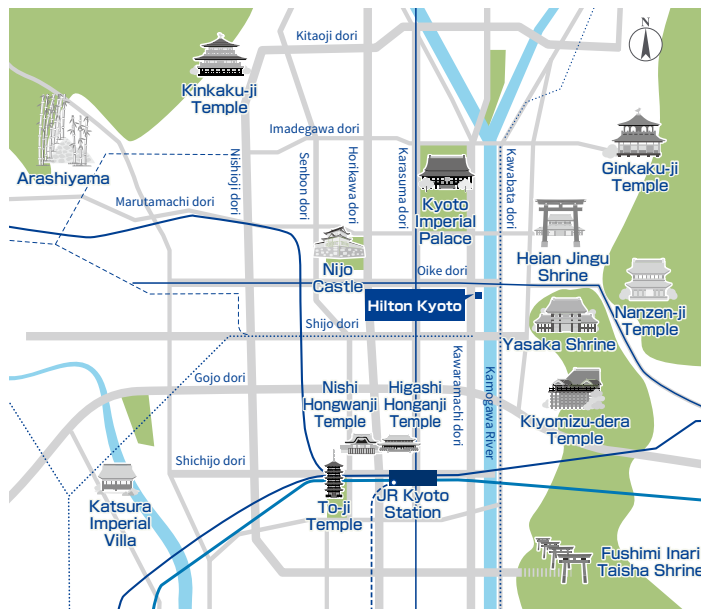
■ Access from airport to JR Kyoto Station

- From Kansai International Airport (KIX), the JR Kansai Airport Haruka Express takes 80 minutes to reach JR Kyoto Station
- From Osaka International Airport (Itami Airport) (ITM), the airport limousine bus takes 50 minutes to reach Kyoto Station Hachijo Gate

Car

■ From Itami Airport

- 15 minutes by taxi from JR Kyoto Station Karasuma Central Gate
- 20 minutes by car from Meishin Expressway Kyoto-minami IC



DBJ Green Building 認証

In recognition of our outstanding environmental performance and social contributions, the Development Bank of Japan Inc. (DBJ) has awarded our hotel the DBJ Green Building Certification, as one of the most environmentally and socially conscious buildings in Japan.



Check out the latest hotel information from here

hiltonkyoto.co.jp | hiltonkyoto.com

HILTON KYOTO | 416 Shimomaruyacho | Nakagyo-ku | Kyoto | 604-8006 Japan
T : +81(0)75 212 8007 | F : +81(0)75 212 8027 | E : ITMHI_Info@hilton.com